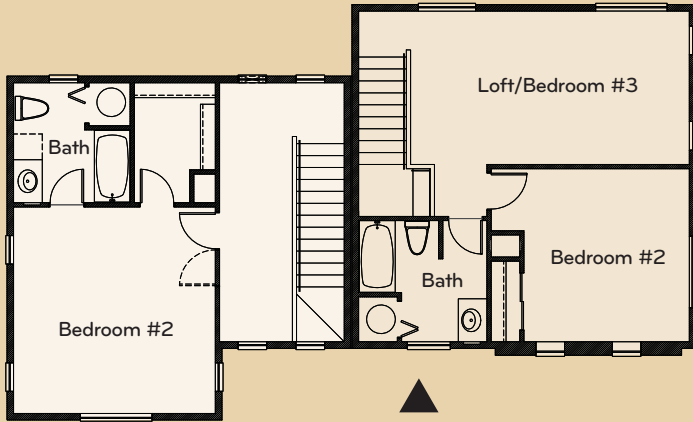


# Dogwood / Elm

# CASCARA

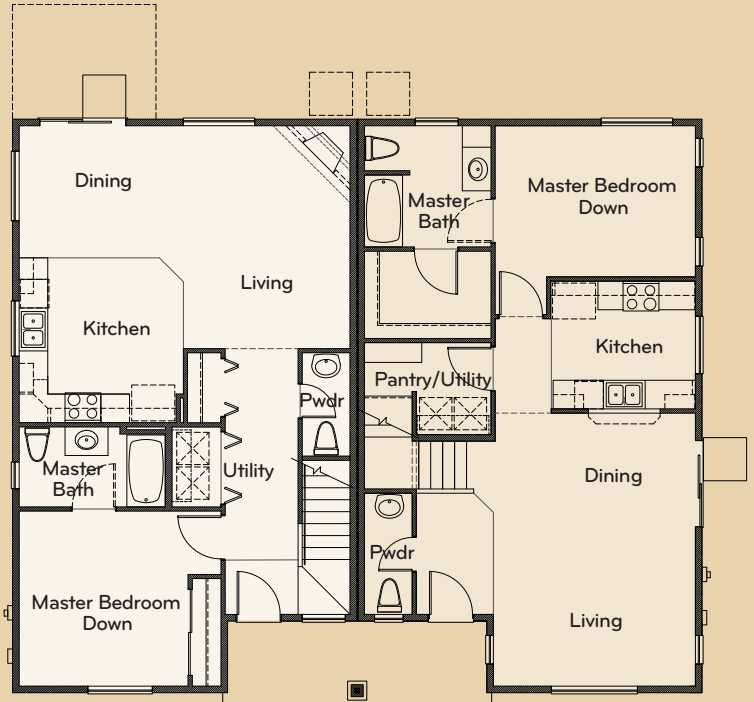
AT THE VILLAGES

# D



**Dogwood**  
Upper Floor

**Elm**  
Upper Floor



**Dogwood**  
Main Floor

Approx. 1,400 sf  
2 Bedrooms  
2.5 Baths

**Elm**  
Main Floor

Approx. 1,448 sf  
2-3 Bedrooms  
2.5 Baths



Artist's rendering does not reflect color or exterior choices and is used for demonstration only.

For More Information, Contact:  
Karen Hutchens or Sunny Villars  
425-367-4763

  
Windermere  
SOLUTION PARTNERS NW

**QUADRANT HOMES**

